

# CERTIFICATE OF LOCATION OF GOVERNMENT CORNER

Northeast Corner of Section 21, Township 108, Range 43, 5th P.M.

STATE OF MINNESOTA, County of Murray

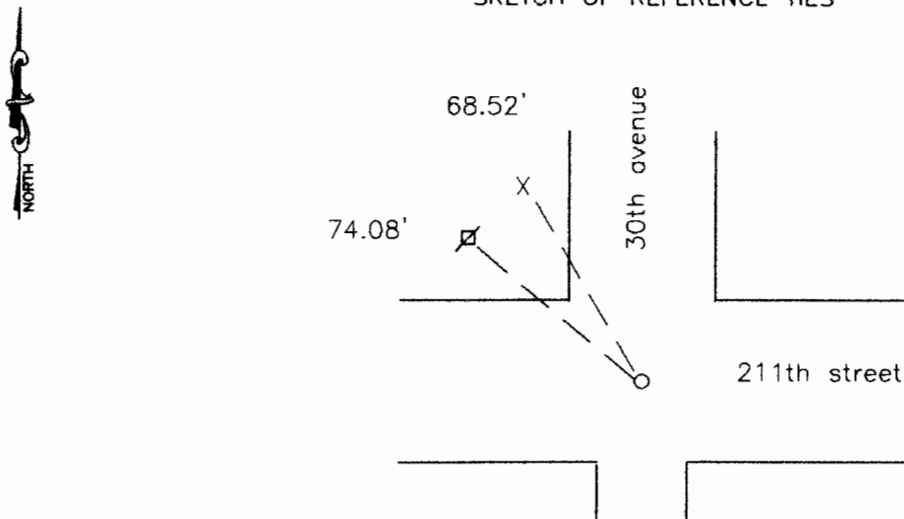
At the corner location shown on the sketch:

On 11-12-01 found a 1/2" rerod 4" down  
DATE

left monument as found,  lowered monument,  removed monument (explain)

On 11-12-01 placed a 5/8" rerod w/seal #11943 on top of it  
DATE

### SKETCH OF REFERENCE TIES



Nail and seal in top of wood post 68.52' Northwest

Nail and bottle cap in power pole 74.08' Northwest

Statement of evidence relative to this corner location is on back of page.

I hereby certify that this document and the data contained herein was prepared by me or under my direct supervision.

Lyle C. Moring 11-27-01  
SIGNATURE DATE

Registration No. 11943

- Land Surveyor,  Professional Engineer
- County Surveyor,  County Engineer

OFFICE OF THE COUNTY RECORDER  
County of \_\_\_\_\_

I hereby certify that this document was filed in the Co. Recorders office at \_\_\_\_\_ .M on the \_\_\_\_\_ day of \_\_\_\_\_ A.D. 19 \_\_\_\_\_

County Recorder \_\_\_\_\_  
By \_\_\_\_\_, Deputy

DOCUMENT NO. \_\_\_\_\_

DEC 27 2001

Statement of Evidence

Original survey was done in 1866.

On November 12, 2001 Moseng Land Surveying dug and found a 1/2" rerod 4" down. We placed a 5/8" rerod with a seal #11943 on top of it.